


Project Meeting 

Beginning an

Age Friendly Community Plan



Today's Activities



Ask questions as they form. 





Age Friendly Community Plan

Little behind.

Milestone hit!



AFCP Resources: Goals & Objectives

1. A measurable increase in support for seniors in Golden
2. A measureable increase in the use of existing and new services by seniors over time
3. An **indication** that organizations are working collaboratively to address the needs of seniors
4. An **indicator** for tracking the level of satisfaction by seniors using services and supports
5. Increased resources available to address senior' needs.
6. An **indication** of how the chosen approach to services will ensure sustainable access to seniors in future years
7. An **indication** of how the service model (action plan) might be expanded beyond Golden
8. Quality of life – increase...

Golden's AFCP Task Force

Name	Org
Sheldon Dwyer	IH/Durand Manor
Karen Cathcart	COTR
Monica De	CBAL
Connie Barlow	GCRS
Mel Myers	GFBS
Ron Oszust	BC Ambulance
Colleen Palumbo	GDHS
Erica Badior	Abbeyfield House Society
Ann Younger	Retired
Jim deBolebec	Semi-retired
Mickey Balas	EK Seniors Care Givers Group
Jean Sime	Retired
Denise English	GDCF, CVWOA
Jim & Susan Halvorson	Retired Teacher & Nurse
Renee Quanstrom	Golden CCRR

Project Plan: Age Friendly Community Plan

Task: Age Friendly Community Plan	Responsible	Weeks																			
		1	2	3	4	5	6	7	8	9	10	11	12	13	14	15	16	17	18	19	20
Planning																					
Sign contract	Consultant & Karen	█																			
Develop draft work plan	Consultant	█	█	█																	
Informal (rural) Age Friendly planning literature review	Consultant		█	█																	
Finalize work plan	Consultant			█																	
Make call out for concerned citizens (Coalition)	Consultant			Media																	
Initiate meeting with Coalition	Consultant																				
Host meeting with Coalition	Coalition & Consultant				Mtg																
Incorporate Coalition feedback into work plan	Consultant				█	█															
Circulate finalized work plan to client	Consultant					█	█														
Execute - Baseline Survey																					
Draft short survey	Consultant					█	█														
Circulate to Coalition	Consultant					█	█														
Coalition review and feedback	Coalition					█	█														
Receive feedback	Consultant					█	█														
Revise survey	Consultant																				
Present & publish Final Survey to Coalition	Consultant						Mtg														
Distribute to Coalition	Consultant																				
Circulate to 125 targeted respondents	Coalition & Consultant							█	█	█											
Collect 100 completed surveys	Consultant							█	█	█											
Input completed survey data (as available)	Consultant								█	█											
Analyze survey data	Consultant									█	█										
Summarize survey data	Consultant & Coalition										█	█									
Present & circulate survey data/conclusions	Consultant											Mtg									
Incorporate conclusions into AF Plan	Consultant												█	█	█						
Execute - Age Friendly Research																					
Review other Age Friendly (AF) Plans	Consultant	█	█	█	█																
Review various AF programs and practices	Consultant		█	█	█	█															
Summarize AF practices	Consultant			█	█	█															
Research Golden's AF programs	Consultant			█	█	█	█														
Summarize Golden's AF programs	Consultant						█	█													
Gap analysis - Golden v. Model Community	Consultant						█	█	█	█	█	█	█								
Identify adjacent/influencing orgs/prgms	Consultant						█	█	█	█	█	█	█	█							
Present Gap analysis to Coalition & set priorities	Consultant												Mtg								
Monitor & Control -																					
Coalition Meetings (as identified above & below)	Coalition & Consultant				Mtg		Mtg				Mtg		Mtg		Mtg		Mtg				
Circulate media release on project progress-to-date	Consultant													Media							
Compare Gap Analysis with Survey results	Coalition & Consultant										█	█	█	█							
Collaboratively identify Priorities	Coalition & Consultant												█	█							
Circulate Draft AF Plan	Consultant																				
Receive Coalition feedback	Consultant																				
Incorporate into AF Plan	Consultant																				
Present and publish final AF Plan	Consultant & Coalition																				
Close Out -																					
Sign off on AF Plan	Connie & Karen															█	█				
Publish AF Plan	Seniors Coalition																Report				
Circulate Final AF Plan	Consultant & Coalition																Media				
Reconcile project expenses	Consultant & Karen																				
Submit invoice	Consultant																				
Receive payment	Connie & Karen																		█	█	
Post-project wrap up meeting with Coalition	Consultant & Coalition																			Mtg	
Post-project wrap up meeting with Consultant	Connie & Karen																			Mtg	

Last Meeting

- ✓ Date: Thursday March 26th
- ✓ Homework:
 - ✓ Reread
 - [Finding the Right Fit: Age-Friendly Community Planning](#)
 - ✓ Survey Questions: shortlist few
 - ✓ List of targeted survey respondents





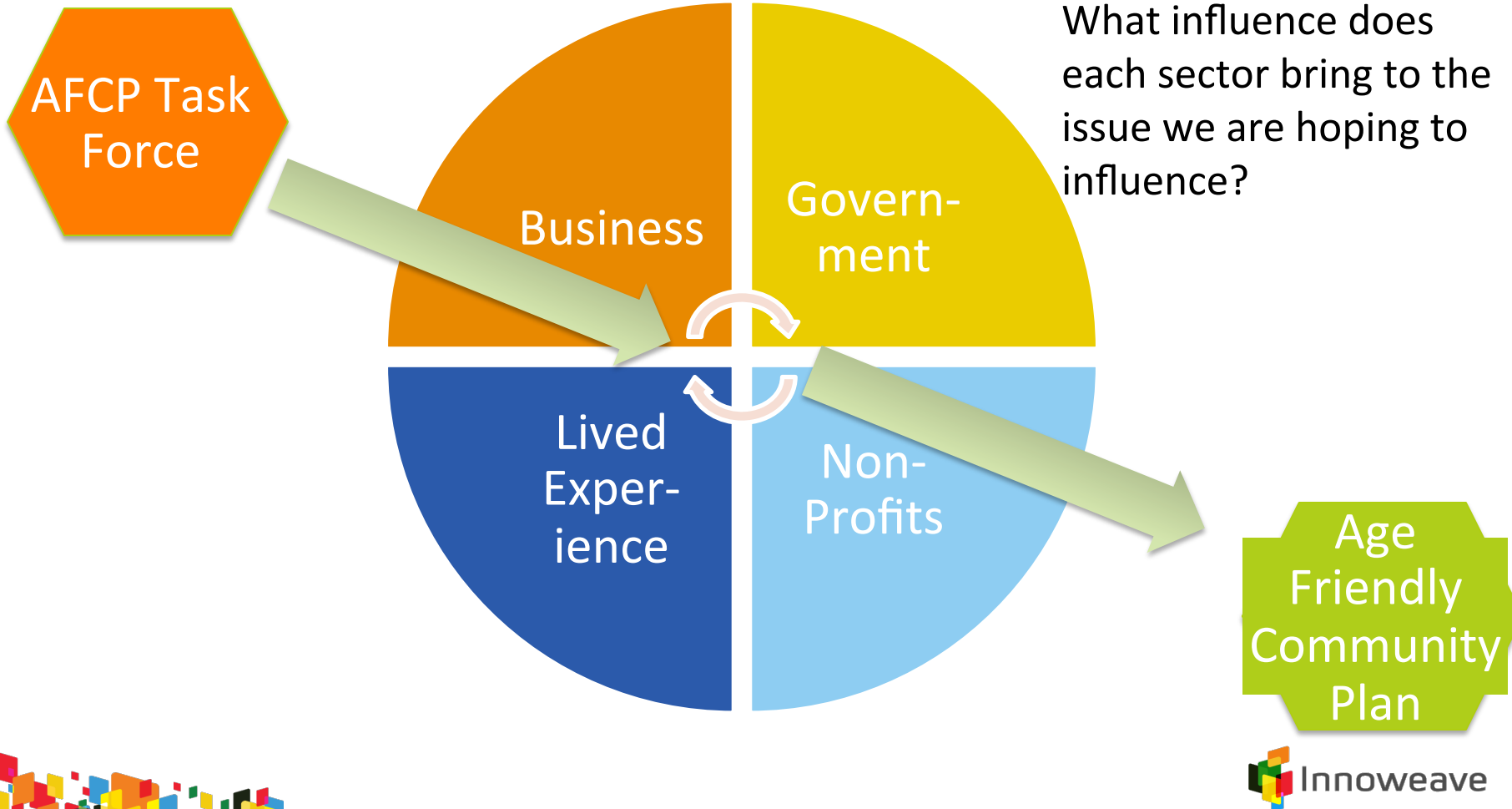
Distribution

To older adults

Will their input be valuable?



Who do we Engage in our communities?



Listing Our Prospects: Dec 3

Business	Government	Non Profits	Lived Experience
<p>Glen Ewan, John & Penny Shephard Bryce Piggott Overwaitea Sharon Eddy, CVCU CIBC KHCCC (Board) Medi-Chair, Sobey's Restaurants, VitalAire, Mount 7 Taxi, Dentists, Doctors (Medical Clinics) BC Hydro EZ Rock, The Golden Star, Local Townie, Members from Tourism Golden (Pool operators) KHMR/RCR, Retailers, LP, CP, Mountain Minerals, Physio, Chiro, Optometrists, Day Care (intergeneration) Tapestry Yoga (Wendy Grant)</p>	<p>Chris Hambruch, ToG Ron Oszust, ToG Katherine Hamilton, CBT Karen Cathcart, Garry Habart ToG Councillors Norm McDonald, David Wilks, Christina Benty CBT, Interior Health, Ministry of Housing, Ministry of Transportation, Ministry of Health, BC Housing, Jordan Petrovics, Chris Cochrane, Joy & Leslie, MLA Office, Ministry of Community Development, Rocky Mountain School District Social Services IH – Home Care, Court Services, RCMP BC Ambulance Fire Departments</p>	<p>Connie Barlow, GCRS Tricia Bowness, GCRS Lee Bedford, GFM Ruth Hamilton, KHCCC Sheldon Dwyer, IH Chris Gaetz, Golden Seniors Centre Society Mandy Cante, GFBS Monica De, CBAL Terry Hickey, RCL Stan & Sheryl Walker, GNSC Mickey Balas, Jim & Susan Halvorson Abbeyfield, Purcell View, Royal Canadian Legion Veteran Affairs, Service Clubs (Rotary, Lions) GWRC, Metis Nation, COTR, PACs, GYBA (shovellers) Golden Rockets, Golden Family Centre Society Hospital Ladies Auxiliary, Legion Ladies Auxiliary Kicking Horse Culture Golden Golf Club Churches, Knights of Columbus, Shriners, UCW (United Church Women) Catholic Women's League (CWL) Safe Homes (GWRC) Restorative Justice Program, Support Group for Caregivers of Seniors Hospice & Palliative (Judy Doyle) Victim Services Golden Curling Club Old Timers Hockey Seniors Badminton Golden & District Community Foundation Golden District Historical Society Youth Coordinator – Patrick O'Neill</p>	<p>Phil Taylor, Jim deBolebec, Ingrid Hambruch, Betty Holland, Ralph & Barb Leigan, Cathy Johnson, Janis Tarchuk, Jeff & Joan Dolinsky, Judy Doyle, Julia Cundliffe, John Dawes, Roy & Joyce Nixon, Assisted Living, Long-Term Care, Independent Living, Care Giver, Senior the moved away, Veteran, Senior from a different culture, Chuck Kucera, Darcy Monchak, Denise English, Ann Sutton Paul Leasom, Russ & Ann Younger, Al & Anita Ure, Past service club members, Retired CP, LP, foresters, guides, CMH Retired nurses, Retired teachers Association, Bakery Ladies – 3pm Group Bakery Men – Morning Group A&W – Morning Group Tim Horton's Groups Tom & Jean Sime,</p>

Shared Measurement: Local Demographics

Golden - Town (Census subdivision)

		2011	2006	2001
TOTAL		3701	3811	4020
Age 0-4		215	215	260
Age 5-14		405	425	585
Age 15-19		240	275	345
Age 20-24		200	280	315
Age 25-44		1140	1160	1,240
Age 45-54	40%	600	640	555
Age 55-64	30%	445	405	305
Age 65-74	16%	235	200	240
Age 75-84	11%	160	170	130
Age 85 and over	4%	65	50	55
Median age of the population		38.1	37.3	34.1
% of the population ages 15 and over		83.30%	83.20%	79.10%

Columbia Shuswap A, Regional District

		2011	2006	2001
TOTAL		3065	3097	3135
Age 0-4		175	150	180
Age 5-14		285	395	495
Age 15-19		185	215	195
Age 20-24		145	145	165
Age 25-44		845	895	1,030
Age 45-54	41%	590	605	540
Age 55-64	36%	520	420	325
Age 65-74	16%	235	185	135
Age 75-84	5%	70	65	60
Age 85 and over	1%	15	15	10
Median age of the population		42.8	40.1	37
% of the population ages 15 and over		85.00%	82.40%	78.50%



Analysis

What does all this data say?



Next Meeting

❑ Date: Thursday April 24th

❑ Homework:

❑ Reread

Finding the Right Fit: Age-Friendly
Community Planning

❑ Survey Administration: online & paper



Today's Activities



Ask questions as they form. 

