


Rotary Club of Golden 

Executing the

Age Friendly Community Plan



Today's Activities



Ask questions as they form. 





Age Friendly Community Plan

Getting close.

All downhill from here!



AFCP Resources: Goals & Objectives

1. A measurable increase in support for seniors in Golden
2. A measureable increase in the use of existing and new services by seniors over time
3. An **indication** that organizations are working **collaboratively** to address the needs of seniors
4. An **indicator** for **tracking** the level of satisfaction by seniors using services and supports
5. Increased **resources** available to address senior' needs.
6. An **indication** of how the chosen approach to services will ensure **sustainable access** to seniors in future years
7. An **indication** of how the service model (action plan) might be expanded beyond Golden
8. Quality of Life (QoL) – increase for 50+

AFCP Task Force Members	Organization
Sheldon Dwyer	IH/Durand Manor
Karen Cathcart	COTR
Monica De	CBAL
Connie Barlow	GCRS
Mel Myers & Stephanie Findlater	GFBS
Ron Oszust	BC Ambulance
Colleen Palumbo	GDHS
Erica Badior	Abbeyfield House Society
Ann Younger	Retired
Jim deBolebec	Semi-retired
Mickey Balas	EK Seniors Care Givers Group
Jean Sime	Retired
Denise English	GDCF, CVWOA
Jim & Susan Halvorson	Teacher (retired) & Nurse
Renee Quanstrom	Golden CCRR
Ruth Hamilton & Lori Baxendale	Chamber of Commerce
Joanne Brown	Golden Seniors Centre

Project Plan: Age Friendly Community Plan

Task: Age Friendly Community Plan	Responsible	Weeks																			
		1	2	3	4	5	6	7	8	9	10	11	12	13	14	15	16	17	18	19	20
Planning																					
Sign contract	Consultant & Karen	█																			
Develop draft work plan	Consultant	█																			
Informal (rural) Age Friendly planning literature review	Consultant		█	█	█																
Finalize work plan	Consultant																				
Make call out for concerned citizens (Coalition)	Consultant			Media																	
Initiate meeting with Coalition	Consultant																				
Host meeting with Coalition	Coalition & Consultant				Mtg																
Incorporate Coalition feedback into work plan	Consultant				█	█															
Circulate finalized work plan to client	Consultant					█	█														
Execute - Baseline Survey																					
Draft short survey	Consultant					█	█														
Circulate to Coalition	Consultant					█	█														
Coalition review and feedback	Coalition																				
Receive feedback	Consultant					█	█														
Revise survey	Consultant																				
Present & publish Final Survey to Coalition	Consultant						Mtg														
Distribute to Coalition	Consultant																				
Circulate to 125 targeted respondents	Coalition & Consultant							█	█	█											
Collect 100 completed surveys	Consultant							█	█	█											
Input completed survey data (as available)	Consultant								█	█	█										
Analyze survey data	Consultant									█	█	█									
Summarize survey data	Consultant & Coalition										█	█									
Present & circulate survey data/conclusions	Consultant											Mtg									
Incorporate conclusions into AF Plan	Consultant										█	█	█	█							
Execute - Age Friendly Research																					
Review other Age Friendly (AF) Plans	Consultant	█			█																
Review various AF programs and practices	Consultant		█	█	█	█															
Summarize AF practices	Consultant			█	█	█	█														
Research Golden's AF programs	Consultant			█	█	█	█	█													
Summarize Golden's AF programs	Consultant						█	█													
Gap analysis - Golden v. Model Community	Consultant						█	█	█	█	█	█	█	█							
Identify adjacent/influencing orgs/prgms	Consultant						█	█	█	█	█	█	█	█	█						
Present Gap analysis to Coalition & set priorities	Consultant												Mtg								
Monitor & Control -																					
Coalition Meetings (as identified above & below)	Coalition & Consultant				Mtg		Mtg				Mtg		Mtg		Mtg		Mtg				
Circulate media release on project progress-to-date	Consultant																				
Compare Gap Analysis with Survey results	Coalition & Consultant										█	█	█	█	Media						
Collaboratively identify Priorities	Coalition & Consultant																				
Circulate Draft AF Plan	Consultant																				
Receive Coalition feedback	Consultant																				
Incorporate into AF Plan	Consultant																				
Present and publish final AF Plan	Consultant & Coalition																				
Close Out -																					
Sign off on AF Plan	Connie & Karen																█				
Publish AF Plan	Seniors Coalition																	Report			
Circulate Final AF Plan	Consultant & Coalition																	Media			
Reconcile project expenses	Consultant & Karen																				
Submit invoice	Consultant																				
Receive payment	Connie & Karen																		█	█	
Post-project wrap up meeting with Coalition	Consultant & Coalition																			Mtg	
Post-project wrap up meeting with Consultant	Connie & Karen																			Mtg	

Definitions: Age Friendly Community Plan



Dimensions

from WHO's Global Age-Friendly Cities: A Guide (2007)

1. Outdoor spaces and Public Buildings
2. Transportation
3. Housing
4. Social Participation
5. Respect and social inclusion
6. Civic Participation and employment
7. Communication and information
8. Community support and health services

Definitions: Age Friendly Community Plan



Dimensions

from WHO's Global Age-Friendly Cities: A Guide (2007)

1. Outdoor spaces and Public Buildings
2. Transportation
3. Housing
4. Social Participation
5. Respect and social inclusion
6. Civic Participation and employment
7. Communication and information
8. Community support and health services

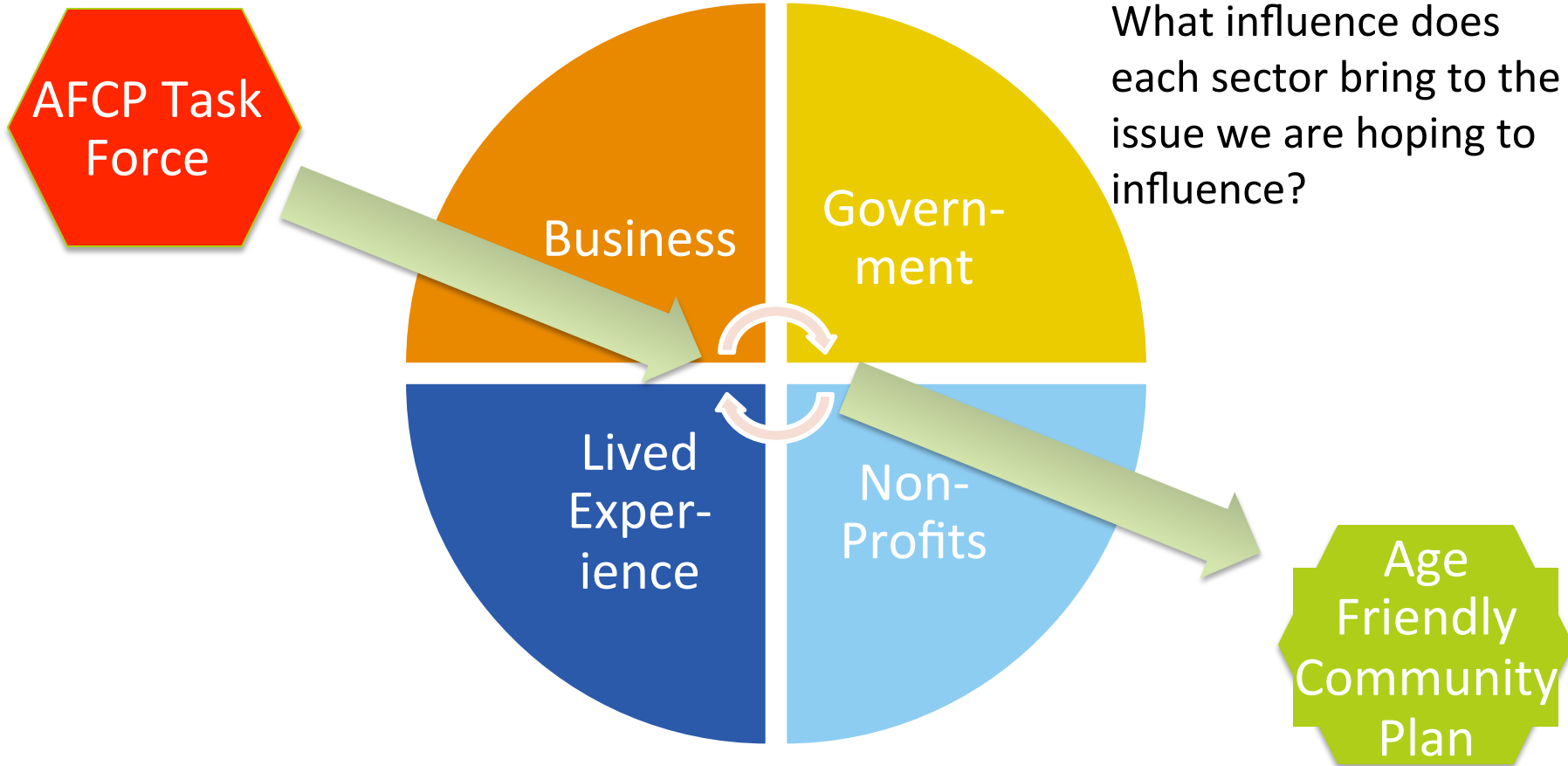


Analysis

Survey Results

What did our respondents say?

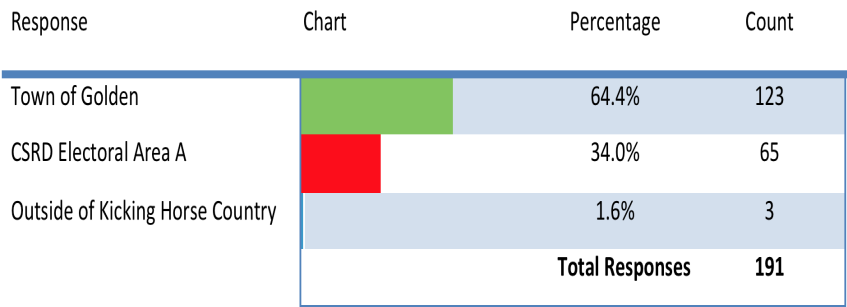
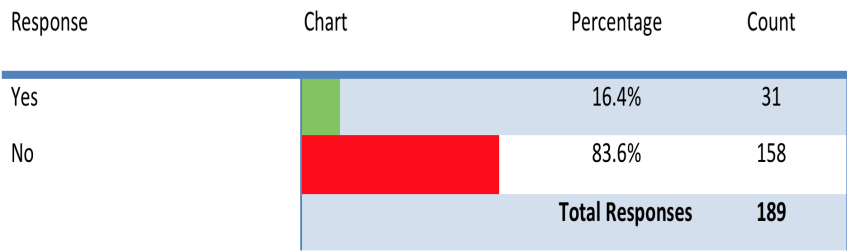
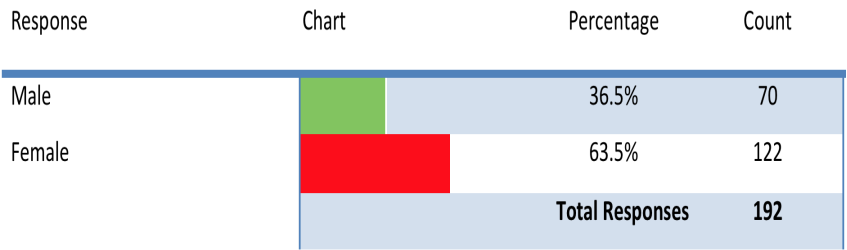
Who did we Engage?



Listing Our Prospects: Dec 3, 2013

Business	Government	Non Profits	Lived Experience
<p>Glen Ewan, John & Penny Shephard Bryce Piggott Overwaitea Sharon Eddy, CVCU CIBC KHCCC (Board) Medi-Chair, Sobey's Restaurants, VitalAire, Mount 7 Taxi, Dentists, Doctors (Medical Clinics) BC Hydro EZ Rock, The Golden Star, Local Townie, Members from Tourism Golden (Pool operators) KHMR/RCR, Retailers, LP, CP, Mountain Minerals, Physio, Chiro, Optometrists, Day Care (intergeneration) Tapestry Yoga (Wendy Grant)</p>	<p>Chris Hambruch, ToG Ron Oszust, ToG Katherine Hamilton, CBT Karen Cathcart, Garry Habart ToG Councillors Norm McDonald, David Wilks, Christina Benty CBT, Interior Health, Ministry of Housing, Ministry of Transportation, Ministry of Health, BC Housing, Jordan Petrovics, Chris Cochrane, Joy & Leslie, MLA Office, Ministry of Community Development, Rocky Mountain School District Social Services IH – Home Care, Court Services, RCMP BC Ambulance Fire Departments</p>	<p>Connie Barlow, GCRS Tricia Bowness, GCRS Lee Bedford, GFM Ruth Hamilton, KHCCC Sheldon Dwyer, IH Chris Gaetz, Golden Seniors Centre Society Mandy Cante, GFBS Monica De, CBAL Terry Hickey, RCL Stan & Sheryl Walker, GNSC Mickey Balas, Jim & Susan Halvorson Abbeyfield, Purcell View, Royal Canadian Legion Veteran Affairs, Service Clubs (Rotary, Lions) GWRC, Metis Nation, COTR, PACs, GYBA (shovellers) Golden Rockets, Golden Family Centre Society Hospital Ladies Auxiliary, Legion Ladies Auxiliary Kicking Horse Culture Golden Golf Club Churches, Knights of Columbus, Shriners, UCW (United Church Women) Catholic Women's League (CWL) Safe Homes (GWRC) Restorative Justice Program, Support Group for Caregivers of Seniors Hospice & Palliative (Judy Doyle) Victim Services Golden Curling Club Old Timers Hockey Seniors Badminton Golden & District Community Foundation Golden District Historical Society Youth Coordinator – Patrick O'Neill</p>	<p>Phil Taylor, Jim deBolebec, Ingrid Hambruch, Betty Holland, Ralph & Barb Leigan, Cathy Johnson, Janis Tarchuk, Jeff & Joan Dolinsky, Judy Doyle, Julia Cundliffe, John Dawes, Roy & Joyce Nixon, Assisted Living, Long-Term Care, Independent Living, Care Giver, Senior the moved away, Veteran, Senior from a different culture, Chuck Kucera, Darcy Monchak, Denise English, Ann Sutton Paul Leasom, Russ & Ann Younger, Al & Anita Ure, Past service club members, Retired CP, LP, foresters, guides, CMH Retired nurses, Retired teachers Association, Bakery Ladies – 3pm Group Bakery Men – Morning Group A&W – Morning Group Tim Horton's Groups Tom & Jean Sime,</p>

10. Demographics: Analysis



Sex:

- 2:1 women to men
- Need to engage older men

Caregivers:

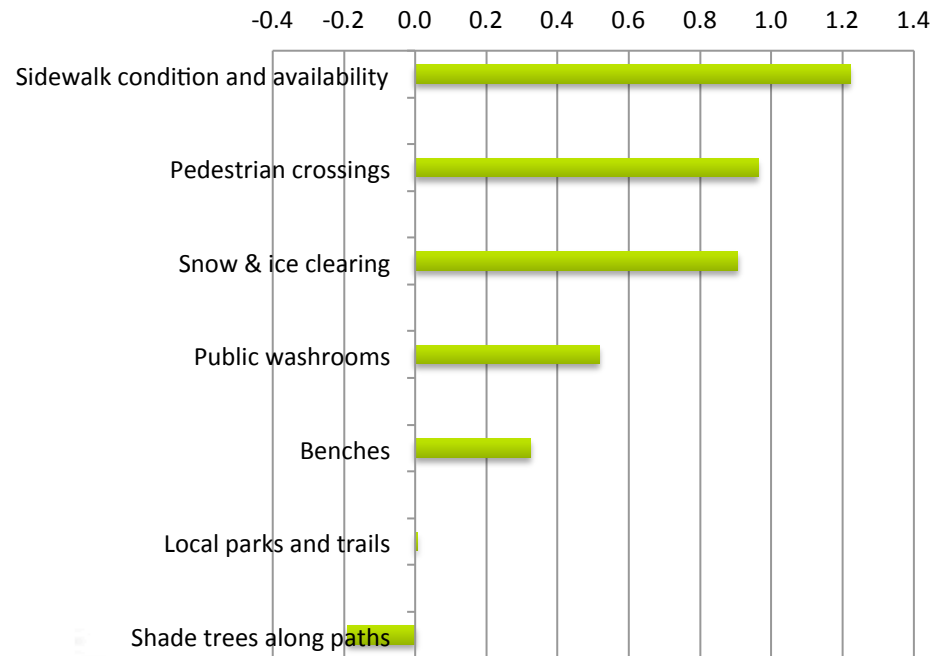
- Need to include specifics on how to support caregivers (Mickey)

Geography:

- 2:1 Town residents to Area A
- Need to engage rural residents

1. Outdoor Spaces and Public Buildings: Analysis

Q1.1 & 1.2 Outdoor Spaces and Public Buildings: Importance - Satisfaction

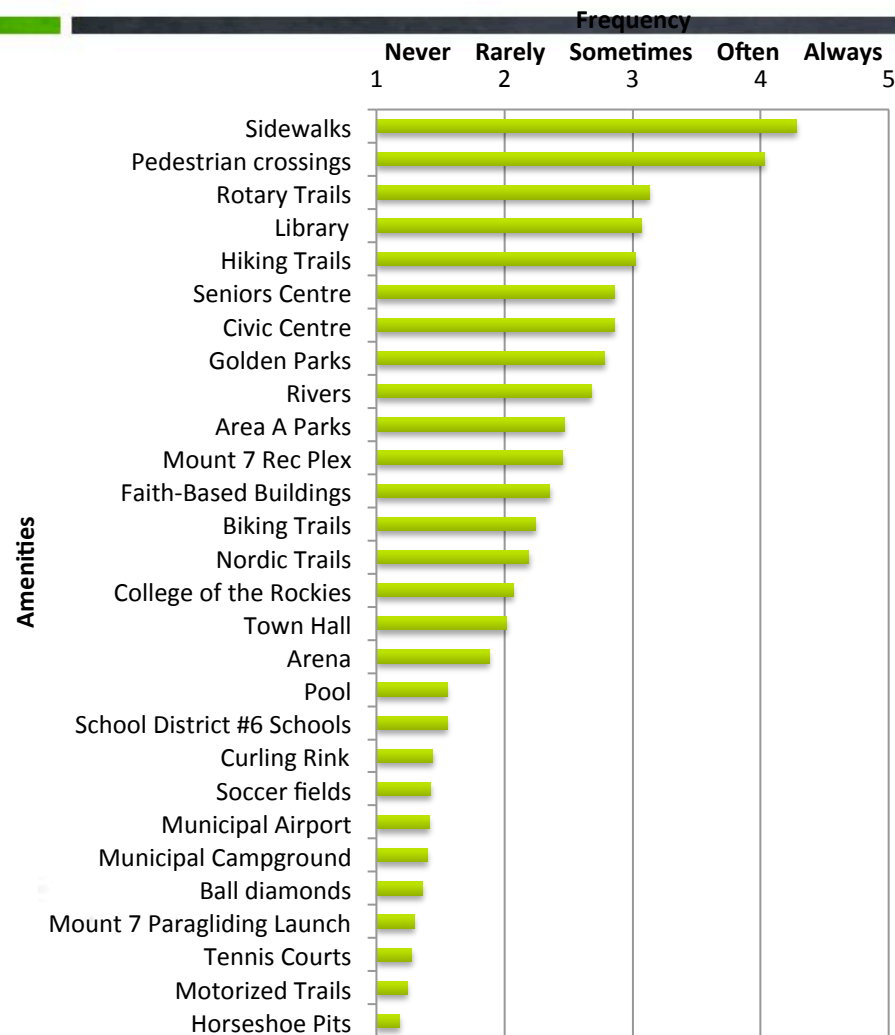


Action items and resources should be prioritized with the following:

1. Sidewalk condition and availability
2. Pedestrian crossings
3. Snow & ice clearing
4. Public washrooms
5. Benches
6. Local Parks and trails
7. Shade trees along paths

Getting Around accounted for 45% of the open comments.

1. Outdoor Spaces and Public Buildings: Analysis



Most frequently used:

1. Sidewalks
2. Pedestrian crossings
3. Rotary Trails

Least frequently used:

1. Horseshoe Pits
2. Motorized Trails
3. Tennis Courts

Most frequently used buildings:

1. Okanagan Regional Library in Golden
2. Civic Centre
3. Seniors Centre
4. Mount 7 Rec Plex
5. Faith-Based Buildings

Heat Map



Sidewalks



Legend

>2.5: Red, High f usage

2.4 - 2.0: Orange

1.9 - 1.5: Yellow

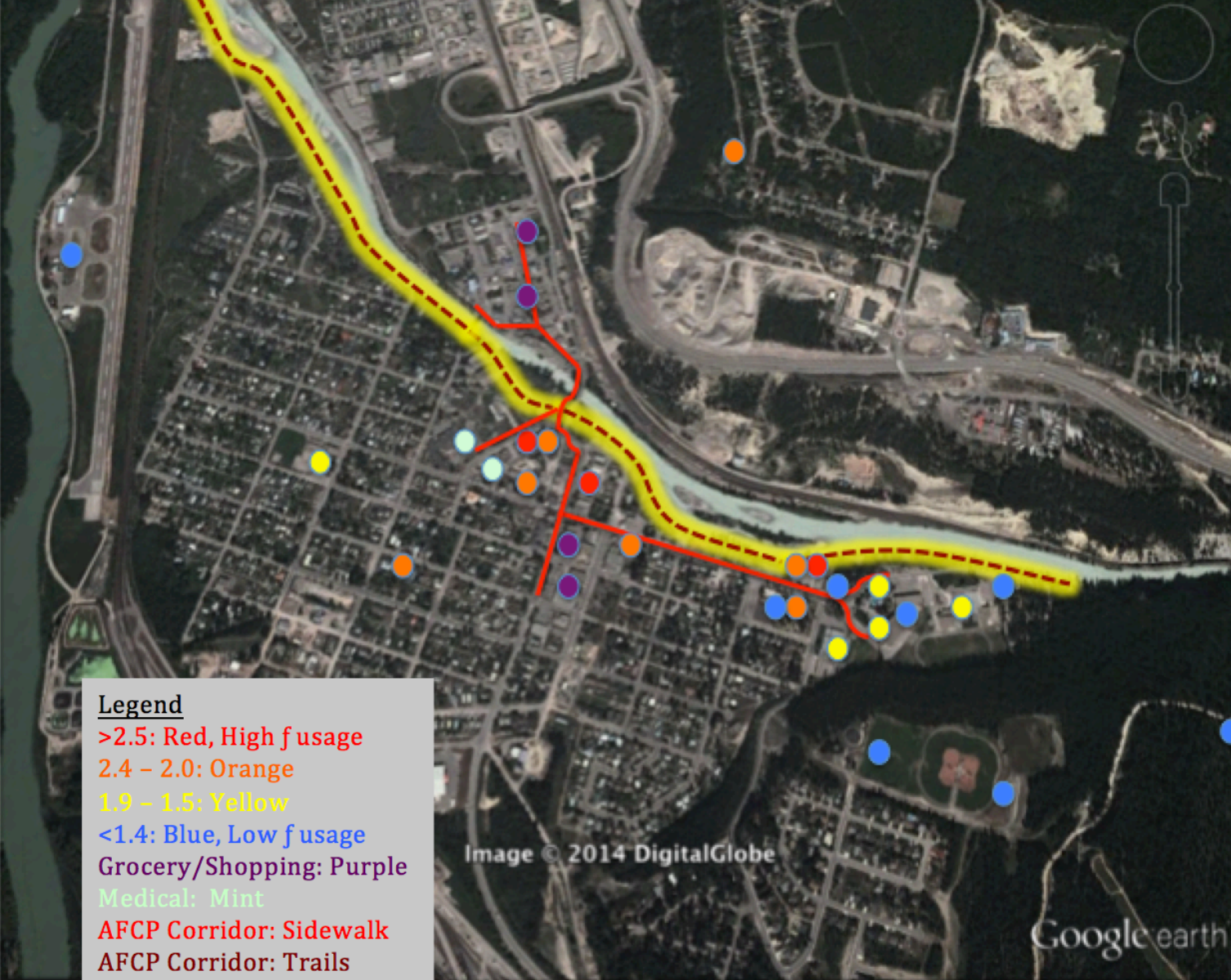
<1.4: Blue, Low f usage

Grocery/Shopping: Purple

Medical: Mint

AFCP Corridor: Sidewalks

Trails



1. Outdoor Spaces and Public Buildings: Analysis



Access & Utilization:

Public resources are optimized when we maintain the most utilized outdoor spaces and building and providing easy access to each.

Possible Tactics:

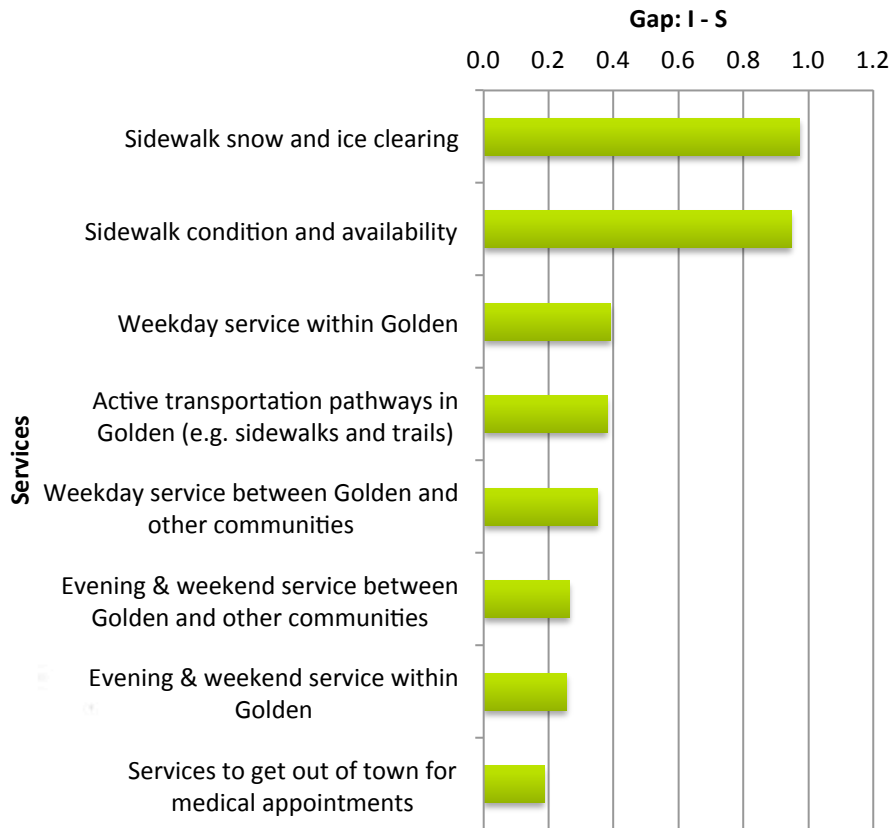
- Promote the 'seniors snow clearing program'
- Promote 'seniors waste pickup program'
- **Better signage** for 'public washrooms' (Campground, Rec Plex, Confluence Park, Airport, Spirit Square, Reflection Lake, and **address gaps** along Rotary Trails).
- Increase ToG \$ reserves for 'Paving, Patching & Sidewalks'
- Increase ToG \$ budget for sidewalks
- Offer 'sand boxes' for all pedestrians to use on trails they feel are icy.
- Joint Use Agreements – ToG, CSRD, SD6, etc.
- Centralized facility booking and management
- Improved access between 'service' and facility clusters
- **Designation of 'Age Friendly Corridors'**

1. Outdoor Spaces and Public Buildings: Analysis



2. Transportation: Analysis

Q2.1 & 2.2 Transportation: Importance - Satisfaction



Gaps:

1. Sidewalk condition and availability
2. Sidewalk snow and ice clearing
3. Weekday service within Golden
4. Active transportation pathways in Golden
5. Weekday service between Golden and other communities
6. Evening & weekend service between Golden and other communities
7. Evening & weekend service within Golden
8. Services to get out of town for medical appointments

2. Transportation: Analysis



Public:

- “No Opinion” represented approximately 1/3 of all responses, with “Neutral” as the second most frequent.
- This suggests that very few people in Golden have experience with the transportation services, likely because there are very few transportation services or their needs are met (self-sufficient).

Tactics:

- Determine steps necessary to regain Provincial support for public transportation
- Approach ‘partners’ (incl. SD#6, biz, other regional groups (RDEK, Invermere Seniors))
- Determine new ‘business plan’ for it.
- Negotiate funding for it or put the question to the electorate as a plebiscite.
- **On-demand service (HandyDART)**
- **Formalize volunteer drivers program (medical and other).**
- Support businesses providing options (prescriptions, food delivery; companionship).

5. Respect and Social Inclusion: Analysis

Q5.1 Respect and Social Inclusion Agreement

Strongly Disagree Disagree Neutral Agree Strongly Agree
1 2 3 4 5



Lowest Agreement:

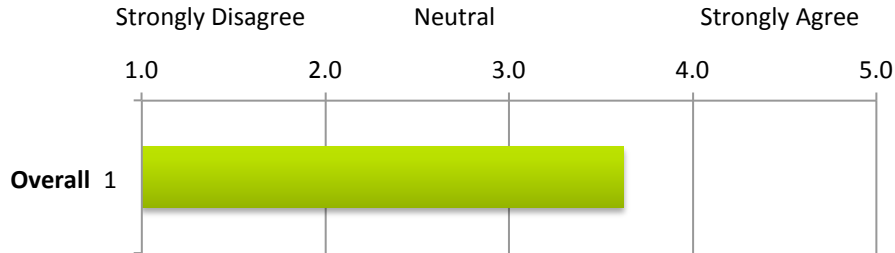
- “The community offers a welcoming environment for older adults.”

Tactics:

- Increased utilization of the Welcome Wagon
- Offering (perhaps subsidized) World Host or Super Host training programs to create more informal community ambassadors)
- Create formal ambassador program
- Increased promotion, awareness at Community Registration Night events
- Better messaging and outreach from local government and service clubs
 - Continue “Community Coordination” discussion from 2013
 - Are we aligned? How do we show it?

9. Overall: Analysis

9.1. Do you agree or disagree with the following statement? "Overall, Golden is a great community to be an older adult."



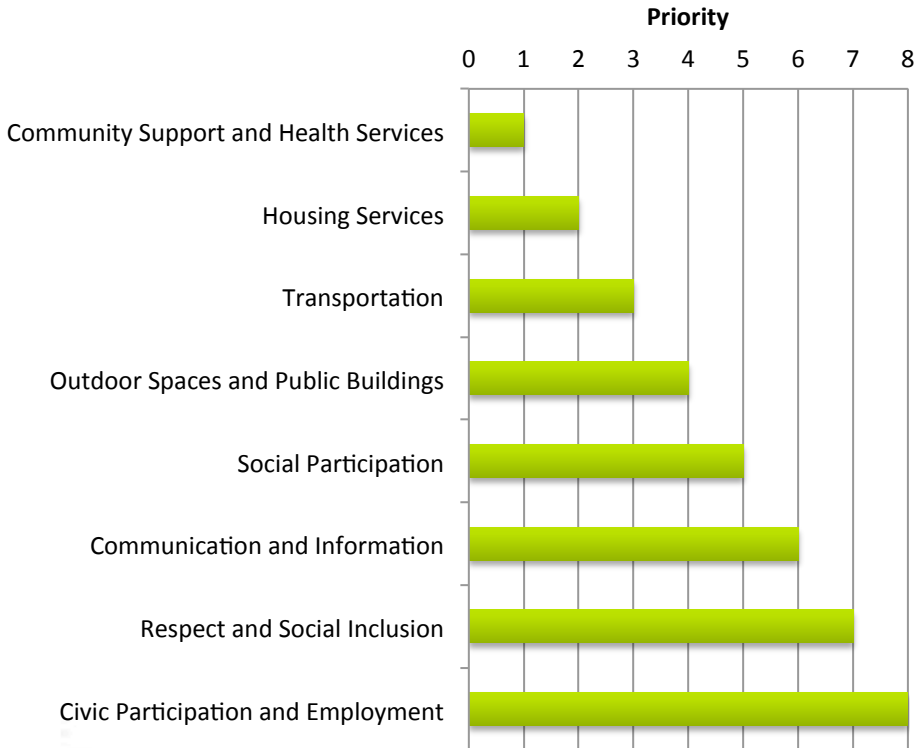
The overall response seems positive, ranging between “Neutral” and “Agree.”

It is not a resounding confirmation that Golden is a great community to be an older adult – and some think quite the contrary – so collaborative and inclusive efforts need to be made by all stakeholders.

Who will lead?

9. Overall: Analysis

Q9.2 Dimensions and Priorities



1st: Community Support and Health Services (1,089 points)

2nd: Housing Services (802)

3rd: Transportation (543)

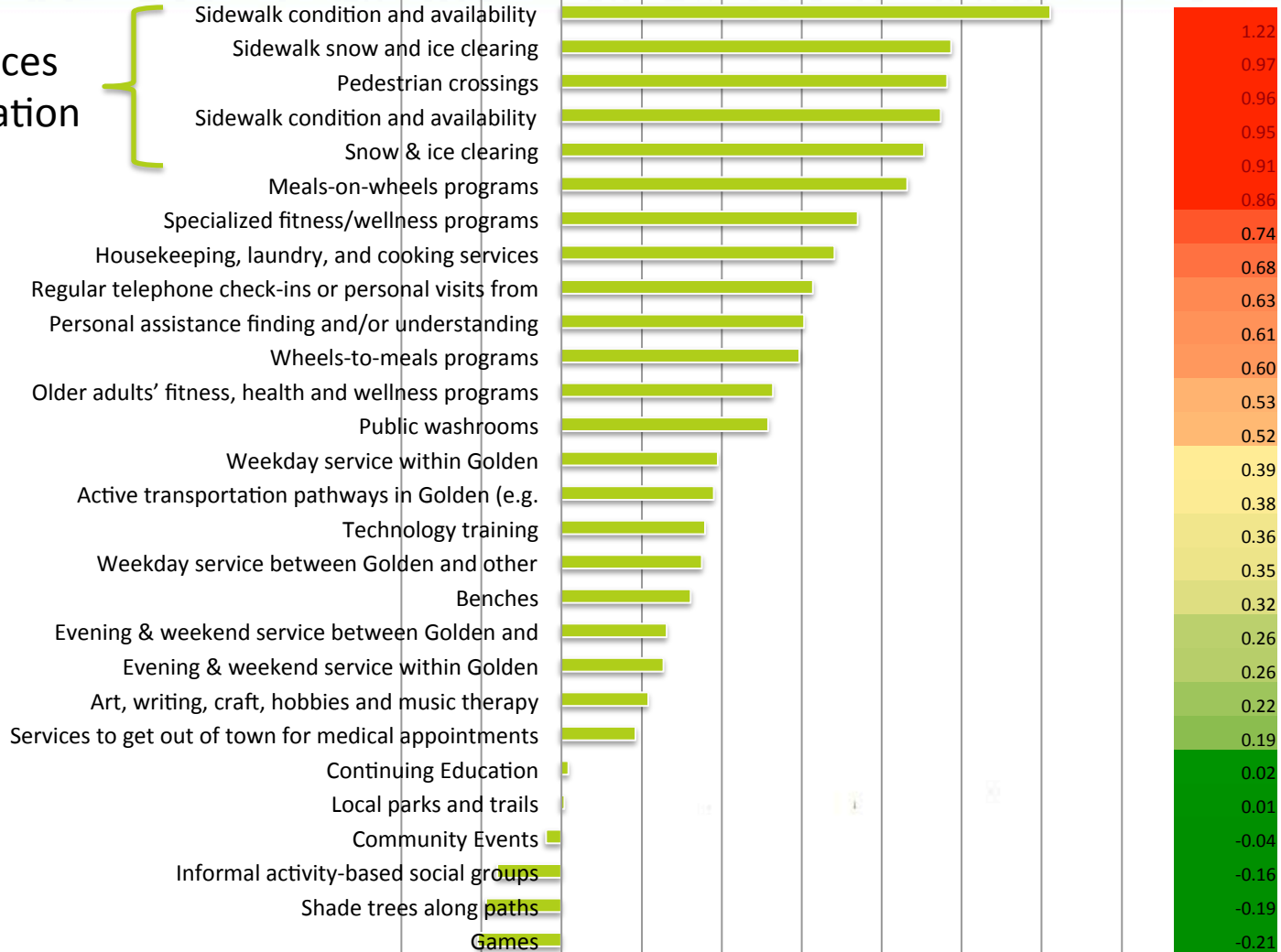
Conclusions and recommendations from the above priority Dimension sections can be ordered accordingly.

9. Overall: Analysis

Gap: I-S

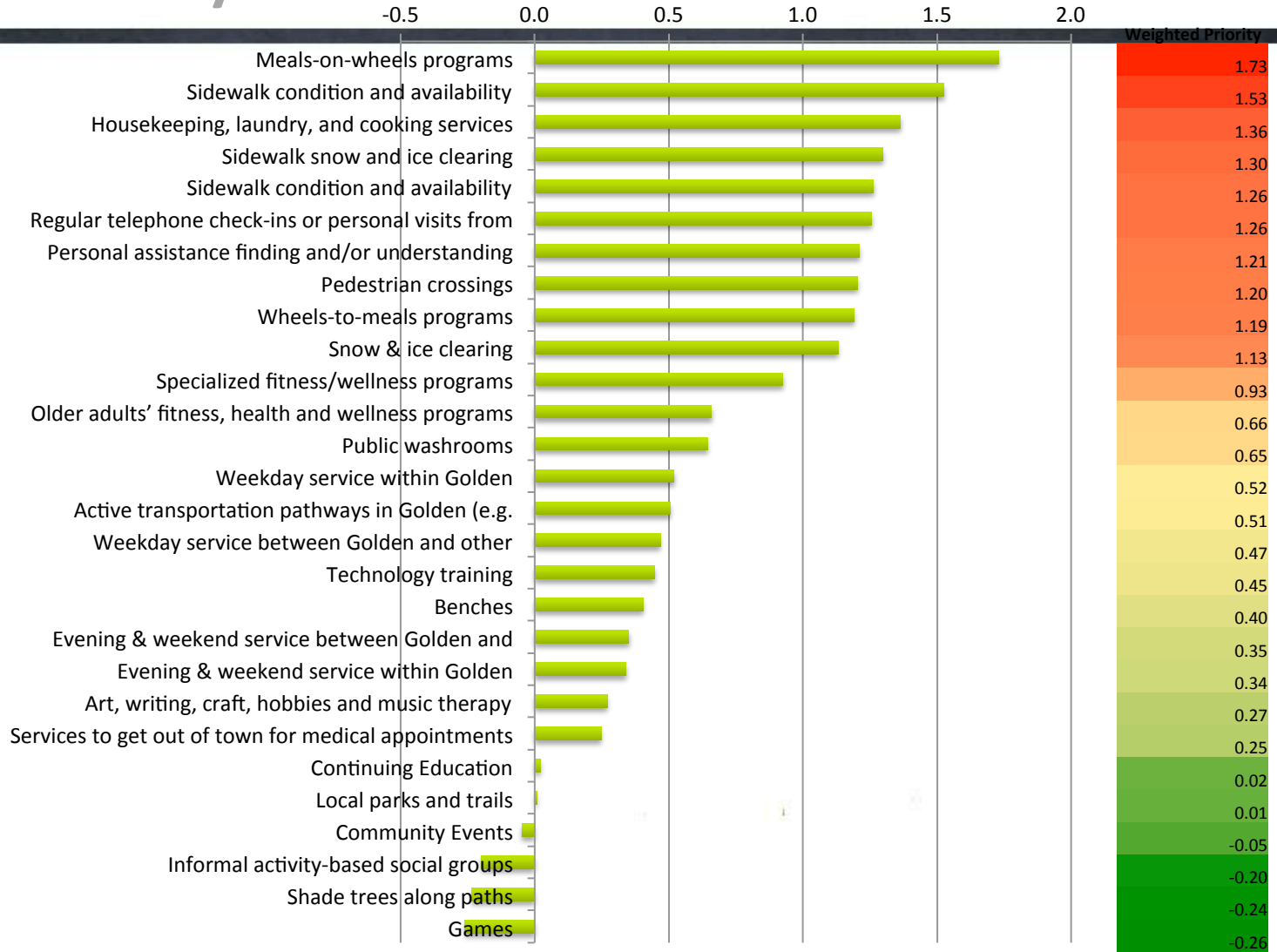
-0.40 -0.20 0.00 0.20 0.40 0.60 0.80 1.00 1.20 1.40

1. Outdoor Spaces & 2. Transportation



9. Overall: Analysis

Weighted Priorities





Presentation of Plan

What is our message? How do we act on it?





Priorities: Age Friendly Community Plan



Dimensions

from WHO's Global Age-Friendly Cities: A Guide (2007)

1st: Community support and health services

2nd: Housing

3rd: Transportation

4th: Outdoor spaces and public buildings

5th: Social participation

6th: Communication and information

7th: Respect and social inclusion

8th: Civic participation and employment

Priorities: Age Friendly Community Plan



Dimensions

from WHO's Global Age-Friendly Cities: A Guide (2007)

1st: Community support and health services

2nd: Housing

3rd: Transportation

4th: Outdoor spaces and public buildings

5th: Social participation

6th: Communication and information

7th: Respect and social inclusion

8th: Civic participation and employment

1. Outdoor Spaces and Public Buildings: Analysis



Access & Utilization:

Public resources are optimized when we maintain the most utilized outdoor spaces and building and providing easy access to each.

Possible Tactics:

- Promote the 'seniors snow clearing program'
- Promote 'seniors waste pickup program'
- **Better signage for 'public washrooms' (Campground, Rec Plex, Confluence Park, Airport, Spirit Square, Reflection Lake, and address gaps along Rotary Trails).**
- Increase ToG \$ reserves for 'Paving, Patching & Sidewalks'
- Increase ToG \$ budget for sidewalks
- Offer 'sand boxes' for all pedestrians to use on trails they feel are icy.
- Joint Use Agreements – ToG, CSRD, SD6, etc.
- Centralized facility booking and management
- **Improved access between 'service' and facility clusters (sidewalks, snow removal, crossings, etc.)**
- **Designation of 'Age Friendly Corridors'**

2. Transportation: Analysis



Public:

- “No Opinion” represented approximately 1/3 of all responses, with “Neutral” as the second most frequent.
- This suggests that very few people in Golden have experience with the transportation services, likely because there are very few transportation services or their needs are met (self-sufficient).

Tactics:

- Determine steps necessary to regain Provincial support for public transportation
- Approach ‘partners’ (incl. SD#6, biz, other regional groups (RDEK, Invermere Seniors))
- Determine new ‘business plan’ for it.
- Negotiate funding for it or put the question to the electorate as a plebiscite.
- **On-demand service (HandyDART)**
- **Formalize volunteer drivers program (medical and other).**
- Support businesses providing options (prescriptions, food delivery; companionship).

5. Respect and Social Inclusion: Analysis

Q5.1 Respect and Social Inclusion Agreement

Strongly Disagree Disagree Neutral Agree Strongly Agree
1 2 3 4 5



Lowest Agreement:

- “The community offers a welcoming environment for older adults.”

Tactics:

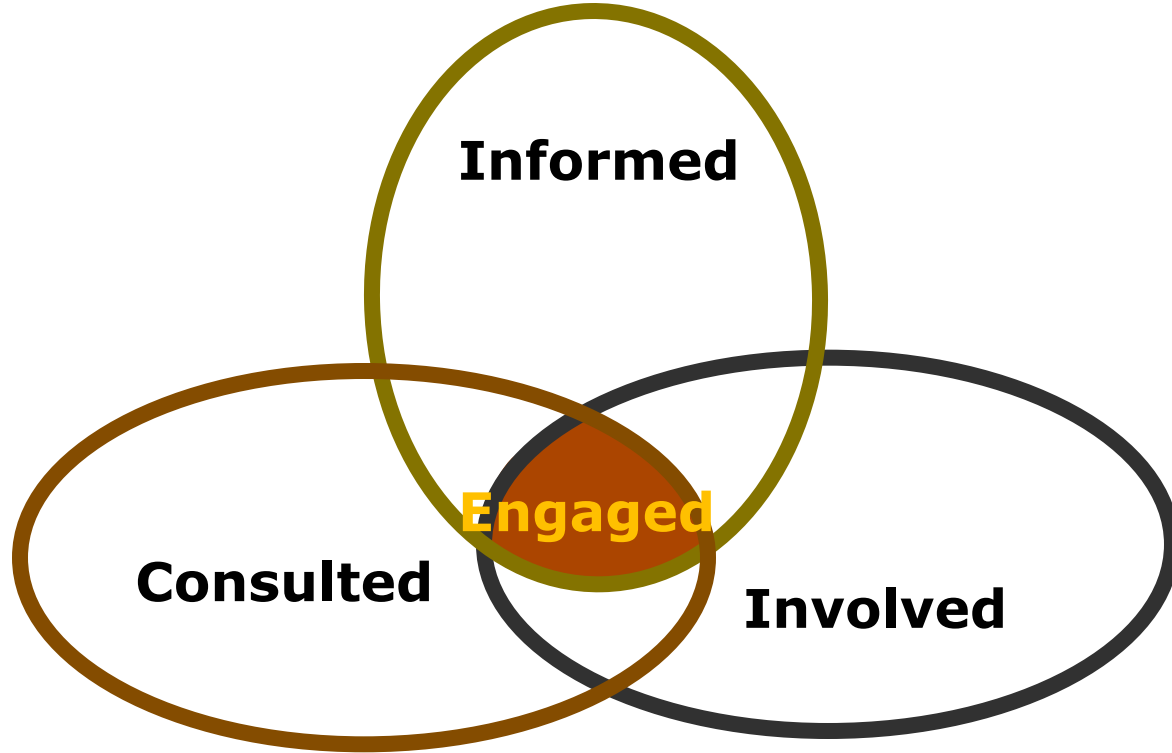
- Increased utilization of the Welcome Wagon
- Offering (perhaps subsidized) World Host or Super Host training programs to create more informal community ambassadors)
- Formal ambassador program
- Increased promotion, awareness at Community Registration Night events
- Better messaging and outreach from local government and service clubs
 - Follows Community Coordination discussion in 2013

ACFP: Who does what by when with what? And why?

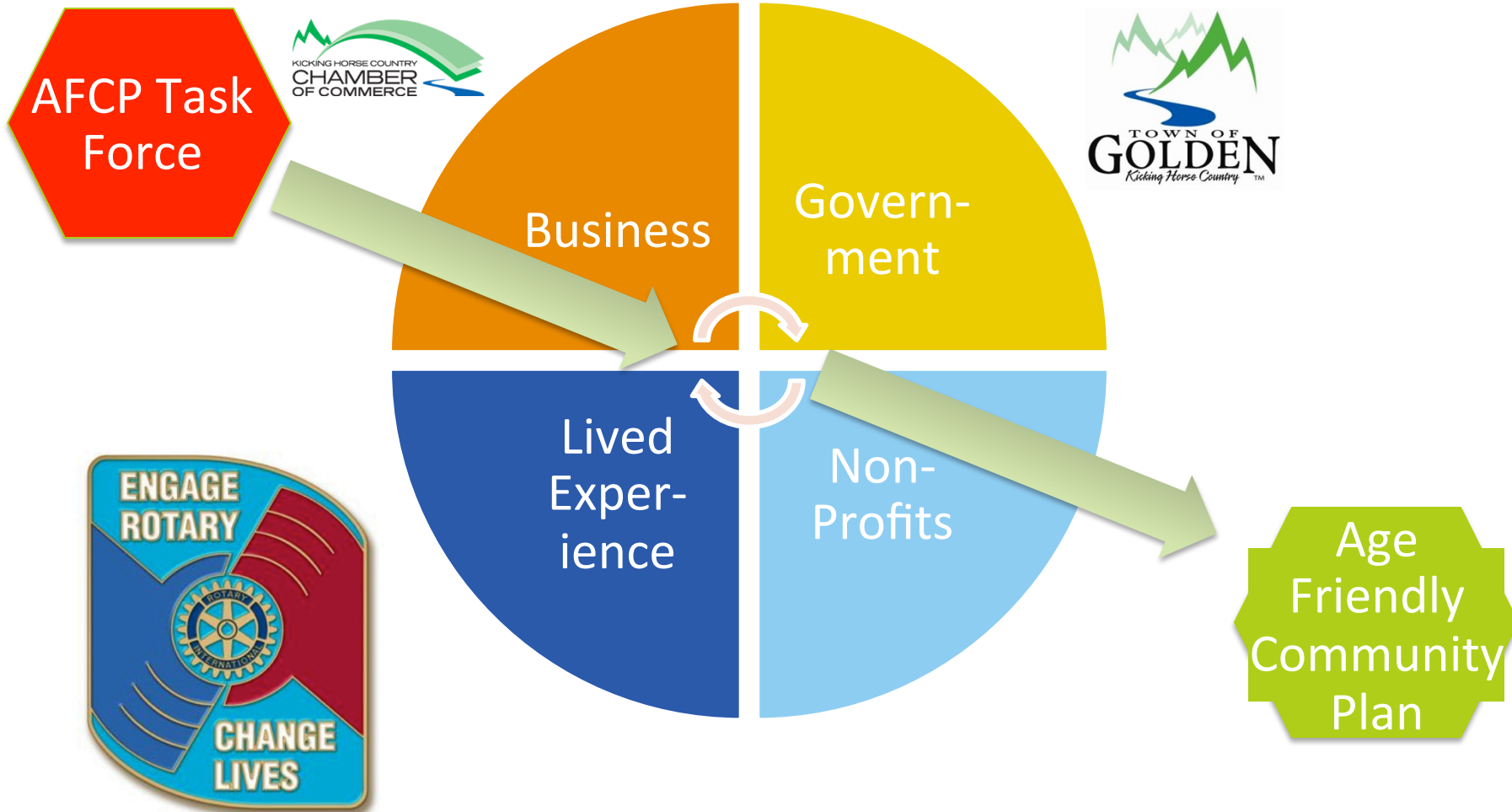
For example, **6. Civic Participation and Employment**

Aspect	Initiative	Priority	Planning Horizon	Convener/ Core Group	Community Engagement	Timeline	Cost & Resources	Follow up Measurement	Status
Employment	Secure Older Worker Program	High (Satisfaction: 3.5/5)	Short	College of the Rockies	AFCP	Continuous	Service delivery agreement	Importance & satisfaction of employment services	Application under review
Civic Participation	Community Conversations	Medium	Short	Town of Golden/Christina Benty/CBT	<i>Community Conversations Series 2013/14</i>	January 2015	Facilitation, meeting space rental	Voter participation	To be proposed
CSRD Fire Suppression	Review of CSRD Fire Services	Low	Long	CSRD/Community Associations	CSRD	TBD	TBD	CSRD resident satisfaction	To be proposed

Why People Commit



Who did we Engage?



What role can Rotary play in executing Golden's Age Friendly Community Plan?

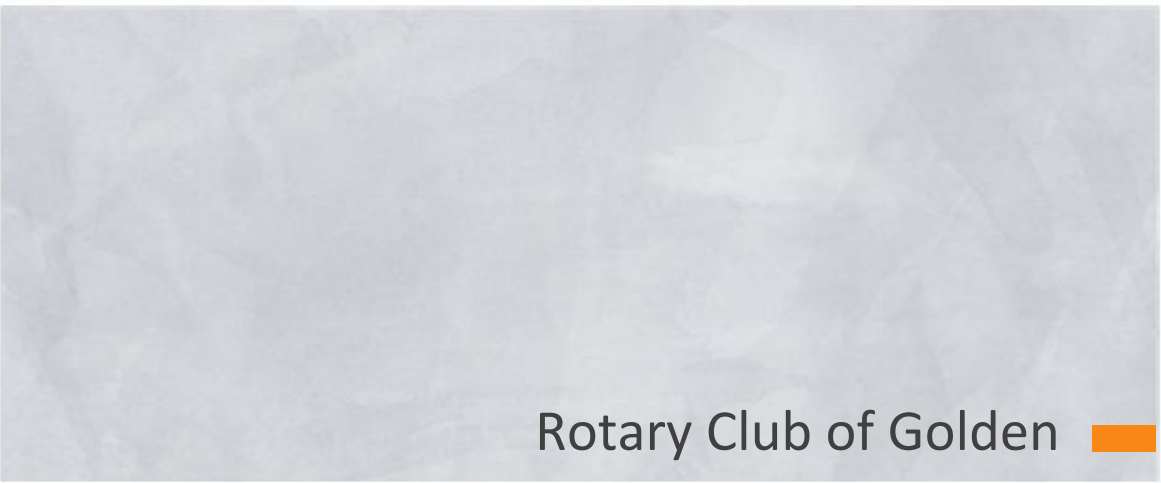




Today's Activities



Ask questions as they form. 





Rotary Club of Golden 

Executing the

Age Friendly Community Plan

