



GOLDEN COMMUNITY RESOURCES SOCIETY

an overview of possibilities

introducing

Community Coordination

Tonight's Activities



Ask questions as they pop into your head 





Community Coordination

How does it work?

Social engineering or common sense?

From Efficiencies Exploration to Coordination



Felt overstretched, volunteer/staff burn-out, excessive administration, lack of progress on community issues.

Saw overlap, gaps and inefficiencies.

Explored efficiency opportunities for non profits in Golden & Area A.



Over 100+ locally registered non profit organizations; 188+ serving Golden & Area A → 2.5x per capita average!

Created online list of non profits on [GoldenLoom.ca](https://www.goldenloom.ca)

Shared efficiency examples from other communities.

Laid ground work for Phase 2.

From Efficiencies Exploration to **Coordination**



Goal:

Community Team/Board/Constellation

Rationale:

**No single, broad decision-making entity/
process**

Limited human & financial resources

Continually tightening regulatory changes
(inspired by Jasper, Revelstoke, others and
Golden)



Supported By:

Columbia Basin Trust, Town of Golden, GCRS

Activities:

Capacity & Organizational **Development**

4Cs: Communication, Coordination, Collaboration & Consolidation
Coalition Support

Involves: **Everyone willing**; organizations, government, business,
individuals

Timing:

Form Community Team in Fall/Winter (Phase 3), **Dec 31st completion**

Communication → Coordination → Collaboration



Communication:

Convening through events like this

Coordination:

Supporting **groups that want to get together**

- i. Events like this, Sport 4 Life, etc.
- ii. SFU CED Course in Golden
- iii. Lunches – Monday for Social Services
- iv. Guest speakers – Kim Bater, Ideas Bank
- v. Workshops – For you to determine!



Collaboration:

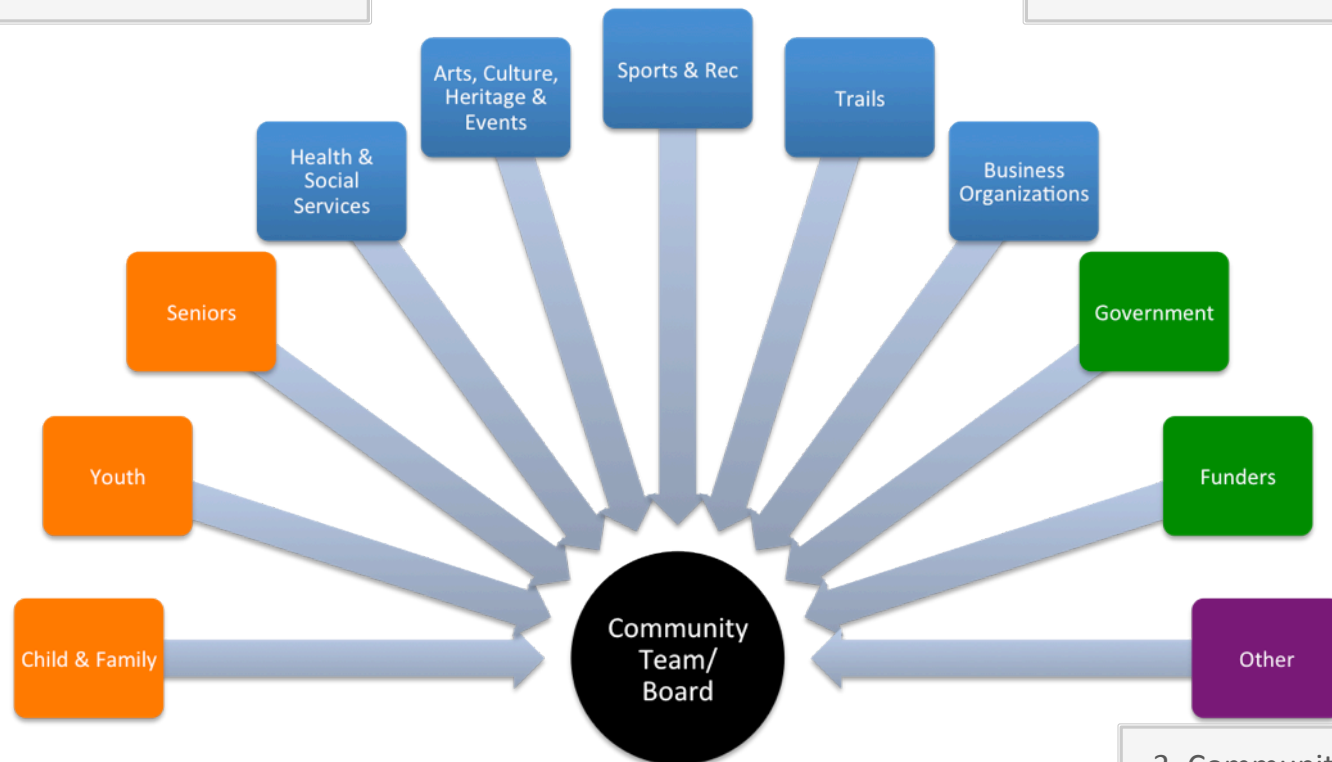
Community **Team**/Board/
Constellation Model

Yeah but, what does this look like?

Here's just one way to visualize a Community Team.

1. Coalitions/Alliances are created by existing organizations

2. Coalitions feed into the Community Team Model



Project Outputs: Coalitions, Survey, Grant Continuum, Community Team's Terms of Reference, Knowledge Sharing, & Coordinator Job Description.

3. Community Team & Coordinator help align community

Trails Groups & Stakeholders

Some are obvious. Some obscure.

BC Integrated Land Management Bureau	Kicking Horse Mountain Resort	Golden Golf Club	Golden Snowmobile Trail Society	The Golden District Rod & Gun Club	Revelstoke Trail Planners/Clubs/Stakeholders
CSRD & Parks Commission	Kicking Horse River Outfitters	GoldenHikes.ca	Kinbasket Nation	The Golden Light Horse Club	Invermere Trails Planners/Clubs/Stakeholders
Columbia Greenways Alliance	Golden & District Historical Society	Golden Forest District	Ktunaxa Nation	Thursday Morning Hikers	Trails BC
Columbia Shuswap Invasive Species Society	Golden & District Rotary Club	Golden Log Truckers Association	Louisiana Pacific	Tourism Golden Association	Trans Canada Trail
Columbia Sno Drifters Society	Golden ATV Club	Golden Nordic Ski Club	Mount 7 Flying Club	Town of Golden	And others...
Columbia Woodlot Association	Golden Backcountry Recreation Access Committee	Golden Outdoor Recreation Association	Parks Canada	Town of Golden Active Transportation Committee	
Golden Area Initiatives	Golden Cycling Club	Golden Snowmobile Club	Shuswap Nation	Wildsight Golden	

Trails Groups

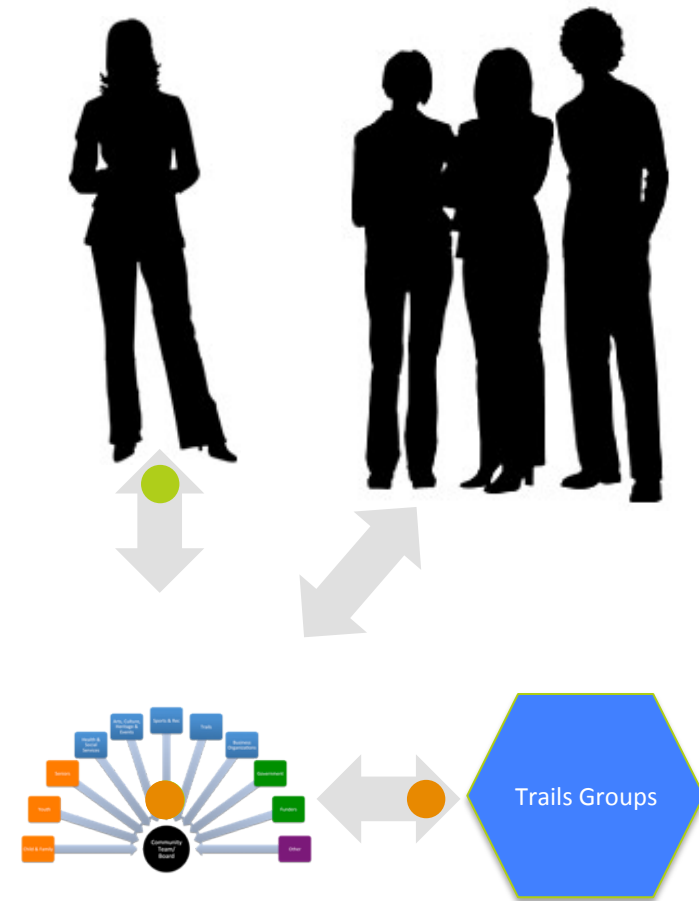
Trails, their organizations, staff and volunteers are connected to the entire community & beyond.



Collaboration

Coordinated & supported **decision-making**,
Planning & **resource utilization**
Community **alignment** & economic development
Higher **quality of life** for residents

It's about team work, and **collaborating** will get us all there.



Issues & Opportunities



Questions for Tourists, Residents & Volunteers:

Do they know about the recreational and volunteer opportunities available to them?

Can they get to the trail heads easily or are they unmarked, unmaintained and regularly inaccessible?



Do the graded trail difficulties align with the target visitor abilities?

And are we utilizing available resources in a way that plans for future trail development, maintenance and marketing?



The structure is there to support

**GETTING THE
RIGHT THINGS
DONE.**

TODAY & TOMORROW.



Community Coordination

Interested? Let us know.

Ryan Watmough. 344-8610. nonprofits.gcrs@gmail.com. www.goldenloom.ca.



Quiz Show



- Question and Answer



1. How many non profit motorized trails organizations are there in Golden & Area A?

4

*Columbia Sno Drifters, Golden ATV Club, Golden Snowmobile Club & Golden Snowmobile Trail Society.
Not including Mech Ski.*



2. What Golden activities have had economic impact studies completed in the last 5 years ?

- A. Skiing & snowboarding
- B. Rafting & hiking
- C. Snowmobiling, mountain biking & golfing
- D. Stand up paddle boarding & river surfing
- E. All of the above



3. Which regional trail systems have been decimated this summer?

Banff & Kananaskis

Currently, most trails are closed and almost all will have some permanent rerouting due to flood damage.

There is also damage from drainages south of Golden through the Columbia Valley.



4. Approximately how many visitors come to Banff National Park and the Yoho National Park's Visitor Centre annually?

- A. 1,000,000 & 100,000
- B. 2,400,000 & 240,000
- C. 4,000,000 & 400,000
- D. 6,000,000 & 600,000
- E. Depends if the highway is open...





Trails Alliance

Stewart Spooner

Trails Manager. Kootenay Columbia Trail Society (RosslandTrails.ca).

Kootenay Columbia Trails Alliance

Volunteer Trail Building

The KCTS began in 1996 as a group of dedicated volunteers with goals of establishing a sustainable trail network for the Rossland community. In most respects, the KCTS has achieved this goal, and volunteers continue to be an essential component of our organisation. Although the KCTS employs paid trail builders to maintain and build the trail network, it relies on volunteers to be the functional and successful network that the community experiences today. The society's directors are all volunteers and we receive help from other clubs, town councils, store merchants and many local residents who commit their free time to build a better trail system.

Others just love to dig and get their hands dirty. Creating sinewy trails through forest that users will appreciate for years to come is gratifying for many people. Humans have been building trails since we've been living on Earth and this pervades many trail users to the core.



The KCTS wishes to engage with the larger community and to assist local trail builders into creating the finest trail network possible. There are endless projects to complete and we can guide your inner building fantasies in a way that will be productive, valued and legitimate.

Look forward in the coming weeks and months to projects and areas that require your help.

Kootenay Columbia Trails Society						
Home Trails News Events About Us Membership Donate Volunteer Locals Info						
Home Trails All Trails						
The KCTS Trail Network						
KCTS TRAILS	Distance (km)	Elevation (m)	Difficulty	Walk/Hiking	XC MTB	Downhill MTB
Antenna	3.5	190	●	x	x	
Back of KC	1.4	130	●	x	x	
Bluffs	2.8	120	●	x	x	
BS	1.5	160	●	x		x
Camp Tweedsmuir	1.2	10	●	x	x	
Centennial	2.7	160	●	x	x	
Centennial	2.2	40	●	x	x	
Cherry Poppins	2	300	●	x	x	x
Coffee Run	1.2	40	●	x	x	
COG	0.5	40	●	x	x	
Columbia	19	90	●	x	x	
Crown Point	3.6	350	●	x	x	x
Dawdinary	5.4	660	●	x		x
Dawdinary Blackside	5.4	660	●		x	x
Dawdinary Street	4.5	270	●		x	
Drakes	3.6	70	●	x	x	
Elder	1.5	180	●	x		x
Flaxspole View	0.7	120	●	x		
Flame	3.8	580	●			x

"The Kootenay Columbia Trails Society is a registered non-profit society, based in Rossland BC, funded by and serving the communities of the Greater Trail region. We exist to manage, maintain, and develop a regional **network of recreational trails for the variety of self-propelled trail users**. These trails serve as a popular amenity for local residents, and as a significant draw for visitors. The Society is governed by a dedicated volunteer board, and operations are carried out by an experienced and passionate professional trails manager and trail crew."

"Most of our trails are located on private property, and public access is only made possible by the generous cooperation of the landowners, who enter into insured agreements with the Society. Our **model of sustained public funding, access to private land, and professional management and maintenance**, is one which many communities would like to emulate, and we willingly share our experience."



Trails Alliance

Stewart Spooner

Trails Manager. 250-368-1440. stewspooner@gmail.com. www.RosslandTrails.ca.



Discussion & Next Steps

How do we best support our trails volunteers?



Is there a better way? Is it working together?

What is your biggest fear with a **Trails Alliance**?

Who are you going to communicate with tomorrow?

Action Items

- » List actions, leaders & deadlines here.
- » Request a MOF inventory of deficient trails.
- » Create a logical flow chart of possible next steps outlined that aims for a 'perfect model'. Present it at the next meeting and allow feedback. Determine what could work? What are the major hurdles?
- » Pay someone to bring it together. Include motorized trail user groups.
- » Inform other user groups of this initiative.
- » Any plans needs to relate to peoples' passions; values.



Recap Tonight's Activities



Action Items will be circulated and reported back to all 



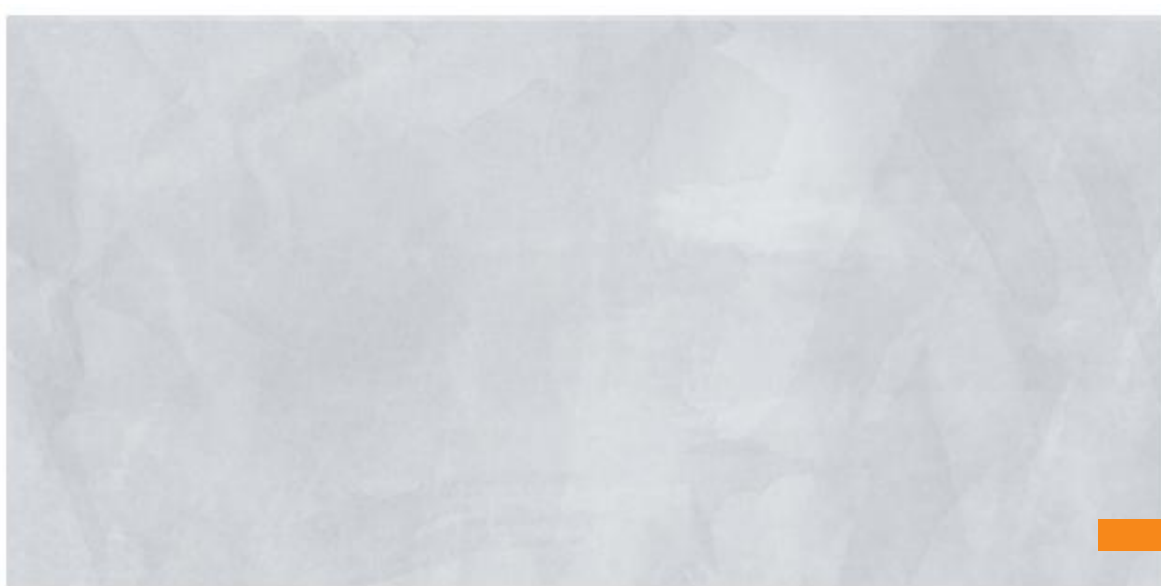


GOLDEN COMMUNITY RESOURCES SOCIETY

a overview of possibilities

introducing

Community Coordination



Good Night!

